

IB IL DALI/MM-PAC + DALI COCKPIT

The DALI master in conjunction with function blocks and the DALI-Cockpit software

Application note
107477_en_00

© PHOENIX CONTACT 2016-07-04

1 Description

This document provides an overview of resources intended to facilitate working with the IB IL DALI/MM-PAC DALI master.

These include:

- Function blocks and documentation
- Application examples
- DALI-Cockpit software

Table of contents

1	Description	1
2	Function blocks for PC Worx	2
3	Application examples for programming with PC Worx ..	2
4	DALI-Cockpit software.....	3

Ordering data

Description	Type	Order No.
Inline, DALI master, multi-master-capable, integrated DALI power supply unit, safe electrical isolation, 500 kbps transmission speed in the local bus, IP20 protection, includes Inline connectors and marking fields	IB IL DALI/MM-PAC	2700605



Make sure you always use the latest documentation.
It can be downloaded at phoenixcontact.net/products.



2 Function blocks for PC Worx

Various function blocks, including documentation, are available to aid in the use of the DALI terminals. They are grouped together in the DALI_BASIC function block library, which is available free of charge.

There are two ways in which you can download the library from the Phoenix Contact homepage.

Download area	Address	Description	File name (example)
Download area for the controller used	phoenixcontact.net/products Page for the controller used, Downloads, Function block	Function blocks for DALI	pc_worx_6_x_dali_basic_x_yy.exe
Download area under Service and support	phoenixcontact.net Service and support, Product Support, Downloads, Function blocks, Free function blocks for PC Worx	Function blocks for light control of a DALI system [EXE, ... MB] version: x.yy	

x_yy = Version of the function block library

From this library, the DALI_MM_Server block acts as the interface between the DALI master and the DALI-Cockpit.

3 Application examples for programming with PC Worx

Application examples are also available in addition to function blocks.

They can likewise be downloaded from the Phoenix Contact homepage.

Download area	Address	Description	File name (example)
Download area under Service and support	phoenixcontact.net Service and support, Product Support, Downloads, Function blocks, Application examples for programming with PC Worx Downloads for PC Worx	Building [EXE, ... MB]: Application examples on the topic of building technology	pc_worx_examples_building.exe

4 DALI-Cockpit software

DALI-Cockpit is a software tool from Lunatone.

You can use DALI-Cockpit to configure DALI systems and monitor communication on the DALI bus.



In the DALI-Cockpit software, communication with the DALI master via Ethernet is only possible using controllers from Phoenix Contact. In the software, the radio button “Ethernet (Phoenix Contact DALI/MM)” is used for this.



For more detailed information on the software, visit lunatone.at.
 Select:
 – “DALI Systems, Software”
 or
 – “Company, Downloads&Datasheets”
 The software, together with documentation, is available to download under both paths.

Addendum for DALI-Cockpit documentation

If you follow the documentation from Lunatone in your work, please take the following addendum into consideration:

2 System Preparation

2.1 Build connection to the DALI-System

...

If no interface was found, check the connection between your PC and the DALI interface.

- Select the “DALI Bus, Bus Interface...” command.

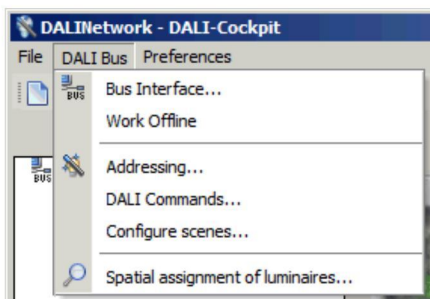


Figure 1 “DALI Bus, Bus Interface”

- In the window that opens, select the DALI bus interface.

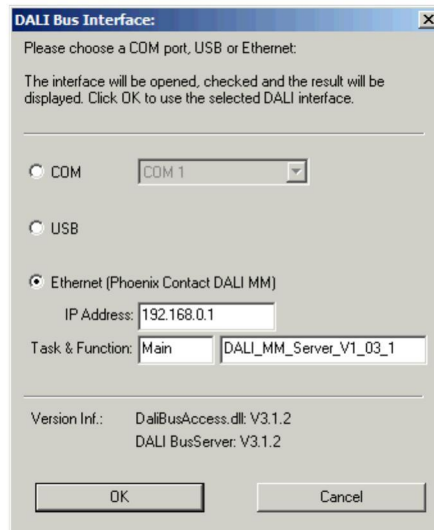


Figure 2 Interface settings

In the example in Figure 2, the DALI bus interface is a Phoenix Contact controller with address 192.168.0.1. PC Worx automatically assigns the “Main” task in the project. When you integrate the DALI_MM_Server block in PC Worx, PC Worx automatically assigns the function block name.

In the example, this is “DALI_MM_Server_V1_03_1” with Version V1_03 of the function block library. You can therefore generally use the default settings. If you are not using the default settings, adjust the entries accordingly.